

The Family-Centered, Comprehensive Case Plan – what is it and how do we do it?

Kirstin Frescoln, PhD, CPM
Center for Children and Family Futures

Marisa Sullens, Coordinator
Hall County Family Treatment Court

Jodi Bell, Case Manager
Hall County Family Treatment Court

Jessica Moore Simmons, Case Manager
Hall County Family Treatment Court



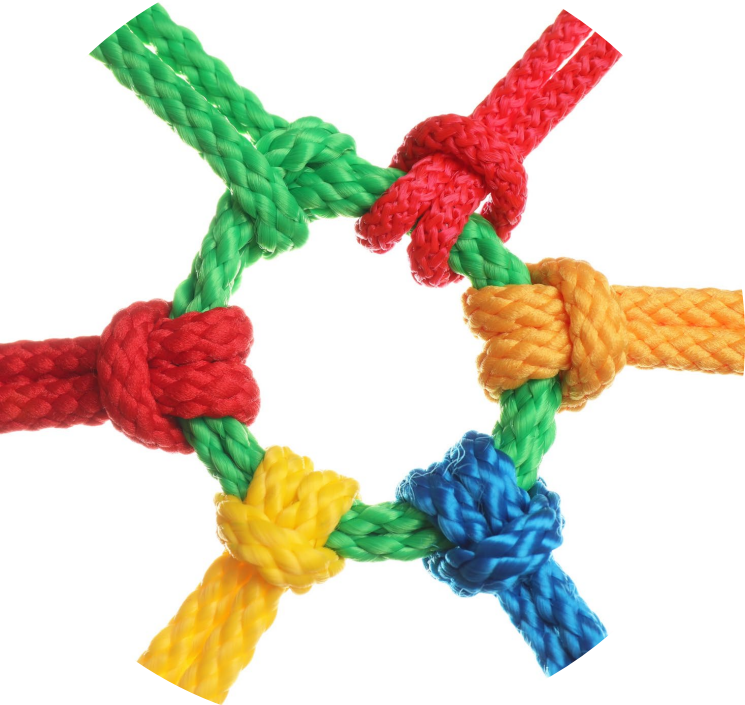
Acknowledgment

This presentation is supported by Grant #2019-DC-BX-K013 awarded by the Office of Juvenile Justice and Delinquency Prevention, Office of Justice Programs, U.S. Department of Justice.



This project is supported by Grant # 2019-DC-BX-K013 awarded by the Office of Juvenile Justice and Delinquency Prevention, Office of Justice Programs, U.S. Department of Justice. The opinions, findings, and conclusions or recommendations expressed in this publication/program/exhibition are those of the author(s) and do not necessarily reflect those of the Department of Justice.

Learning Objectives



At the end of this session, participants will be able to:

- Summarize the research supporting family engagement in the creation of a family-centered case plan.
- Explain how the required DFCS and treatment plans can be combined into a single, family-centered case plan that is used by the FTC.
- Propose strategies to improve upon or move to the development of a comprehensive, family-centered case plan.

The Matter of Time

**Adoption and Safe
Families Act (ASFA) –
12-month timetable for
reunification**

**Treatment and Recovery
– lifelong process**

Conflicting Clocks

**Child Development – impact on bonding
and attachment**





Engagement is Everyone's Job

Engagement begins during the first interaction and continues throughout the entire case

Family Treatment Courts



*A meta-analysis of 16 evaluations examining FTC outcomes found that **families that participated in an FTC were two times more likely to reunify** than families receiving conventional services.*

(Zhang, Huang, Wu, Li, & Liu, 2019)

Long Term Outcomes - What is Success?

E and 5 Rs

Equitable Outcomes in:	All outcomes should be disaggregated by race, ethnicity, gender, and other key demographic information
Recovery	<ul style="list-style-type: none">•Parents access treatment more quickly•stay in treatment longer•decrease substance use
Remain at Home	More children remain at home throughout program participation
Reunification	Children stay fewer days in foster care and reunify within 12 months at a higher rate
Repeat Maltreatment	Fewer children experience subsequent maltreatment
Re-entry	Fewer children re-enter foster case after reunification



Vulnerable children, parents, and family members require the intensive, collaborative efforts of child welfare, the dependency court, treatment providers, and other community members to meet their complex treatment and service needs.

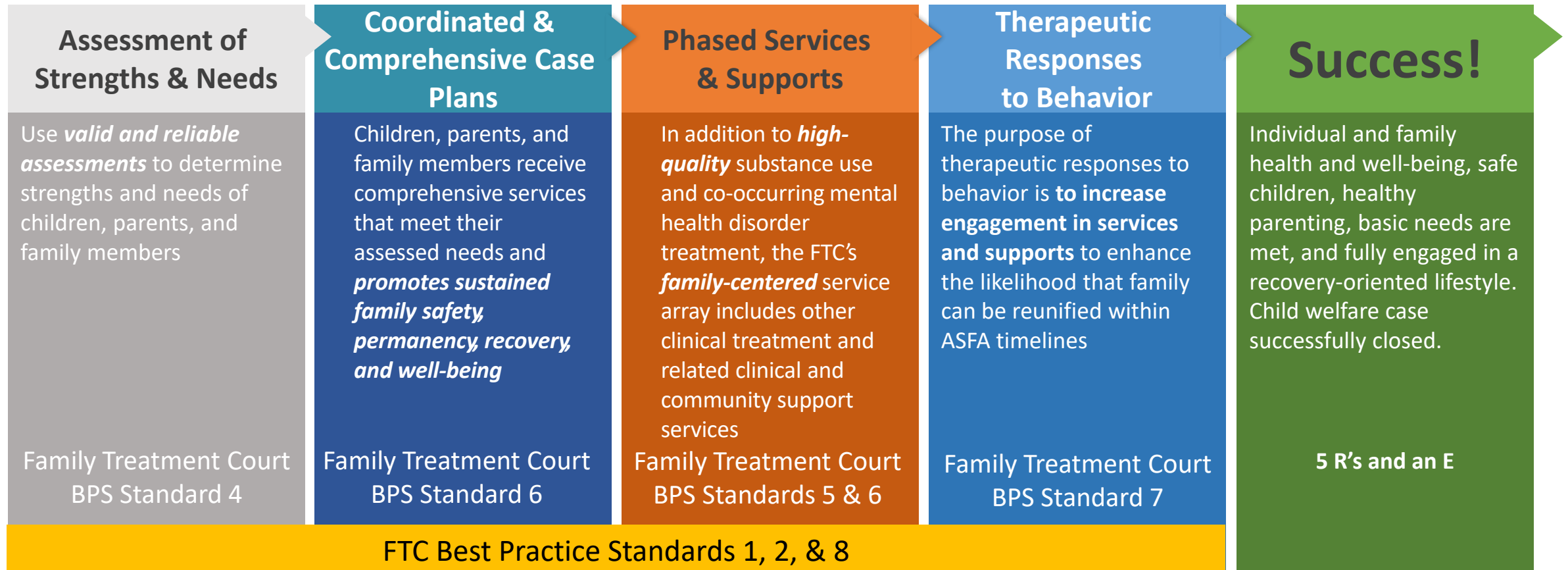
No single agency has the skill or capacity to meet all of their needs.



What Makes Family Treatment Courts Effective?

1. Get parents into treatment more quickly.
2. Support parents to remain in treatment longer.
3. Provide skills-based training and other supports to ensure parents are competent and confident to care for their children.
4. Problem-solve barriers to stable recovery and reunification.

How Does Your Team Help Families Succeed?



Equitable admissions, retention, treatment, responses, and child welfare outcomes – FTC Best Practice Standard 3

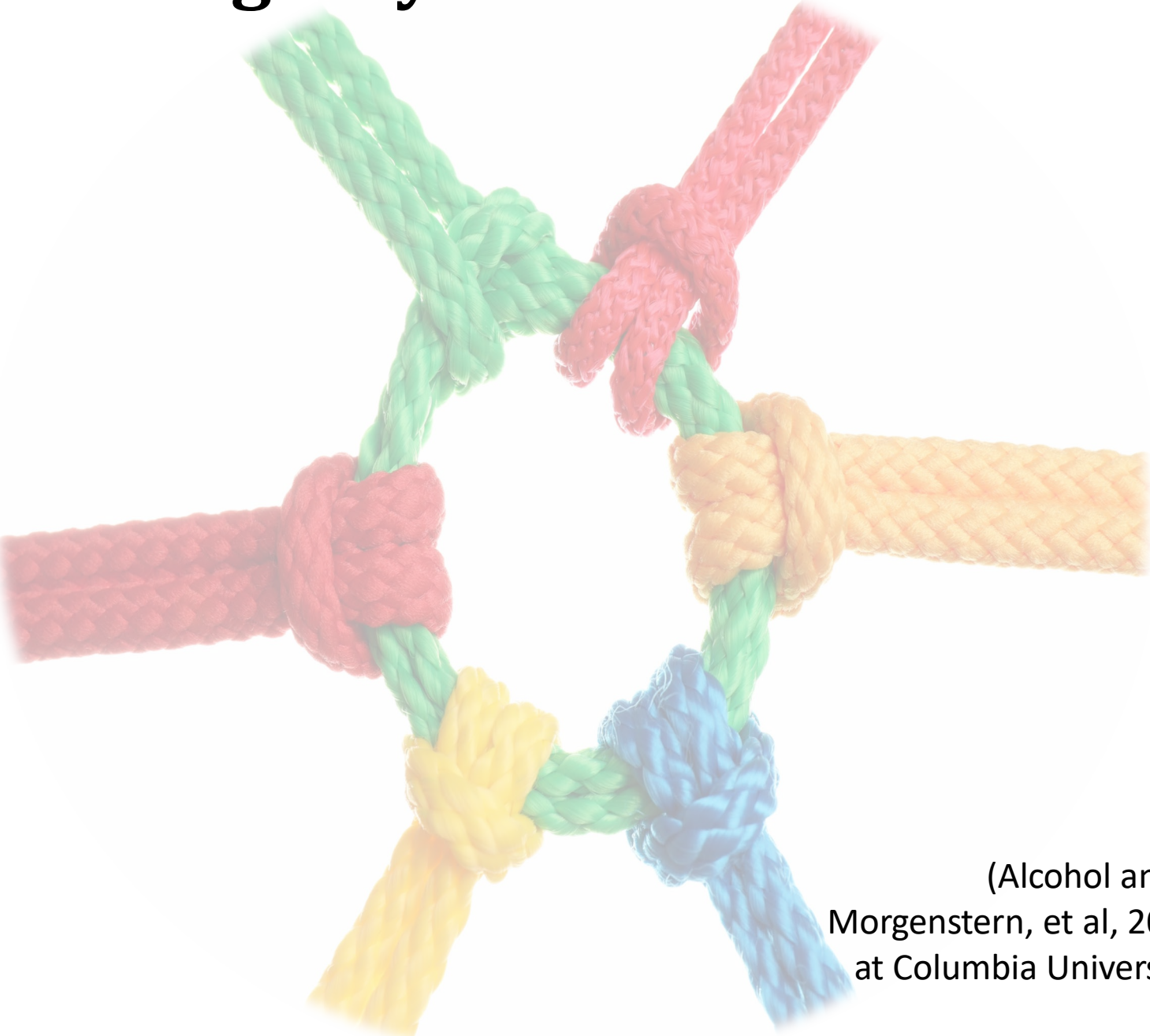
Comprehensive Case Plans



Do Parents Know What They Need to Do to Reunify?



Interagency Service Coordination



Higher levels of interagency service coordination and communication are significantly associated with higher rates of service initiation, engagement, and retention resulting in improved substance use, mental health, and parenting outcomes.

(Alcohol and Drug Abuse Institute, 2018; Morgenstern, et al, 2006; Morgenstern, et al, 2009; National Center on Addiction and Substance Abuse at Columbia University, 2009; National Association of State and Alcohol and Drug Abuse Directors, 2011; Bai, et al, 2009)

The Coordinated, Family-Centered Case Plan

Family Team Meetings:

- Are facilitated meetings.
- ACTIVELY engages parent(s), child(ren), other family members (as appropriate) in meeting.
- Focuses on determining individual and family strengths and needs.
- Results in written plans that the family understands with clearly articulated action steps and who is responsible.

Family Group Decision Making:

- Sets out broad steps needed for successful case closure.
- Seeks to reduce the number of times a family has to tell their story or engage with professionals in developing a case plan.

Professionals accommodate the needs of the family - Not the other way around!

The Coordinated, Family-Centered Case Plan

Embraces each family's unique culture, including race, ethnicity, gender and gender identity, sexual orientation, socioeconomic status, geographic location, and other factors associated with the family's identity

Considers how to build upon the family's culture to strengthen parenting capacity, safety, and support networks

Reduces disparities in outcomes by ensuring all children, parents, and families are supported and engaged equitably

The Coordinated, Family-Centered Case Plan



Sequence and timing of services are realistic and achievable

Participant's immediate needs are balanced with their long-term goals

Plans are individualized, family-driven, culturally competent, and community and strengths-based

Plans are family-focused and address family functioning with special attention paid to coordinating child and adolescent services with those of the parent

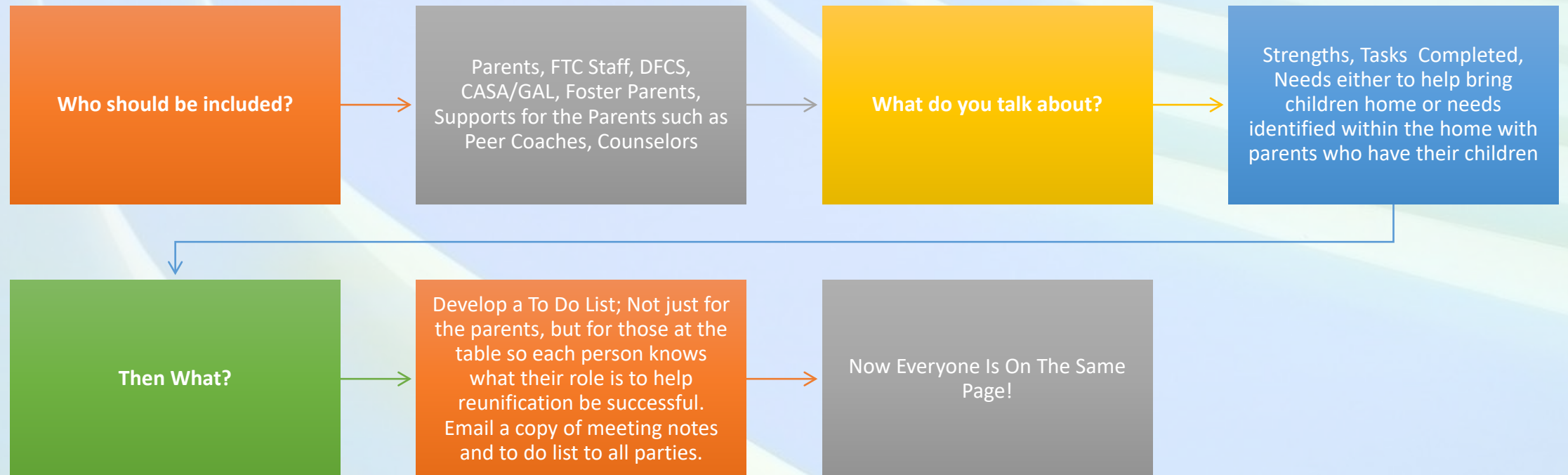
Collaboration reveals potential areas of multiple and potentially conflicting requirements from different systems so conflicts can be resolved

Case Plans are Developed with the Family

- Include a broad definition of family to include all individuals whom the child and parent consider “family”
- Prioritize a family’s cultural beliefs, values, and traditions
- Increase parent and child engagement in case plans
- Support the parent’s commitment to achieving case objectives as well as relationships between the parent, child, and service providers
- Enhance the fit between the family member’s needs and services

Include the parent’s attorney or legal team’s social worker and/or peer support in case planning and team/family meetings to provide additional support

Family Treatment Court Roundtable Meetings

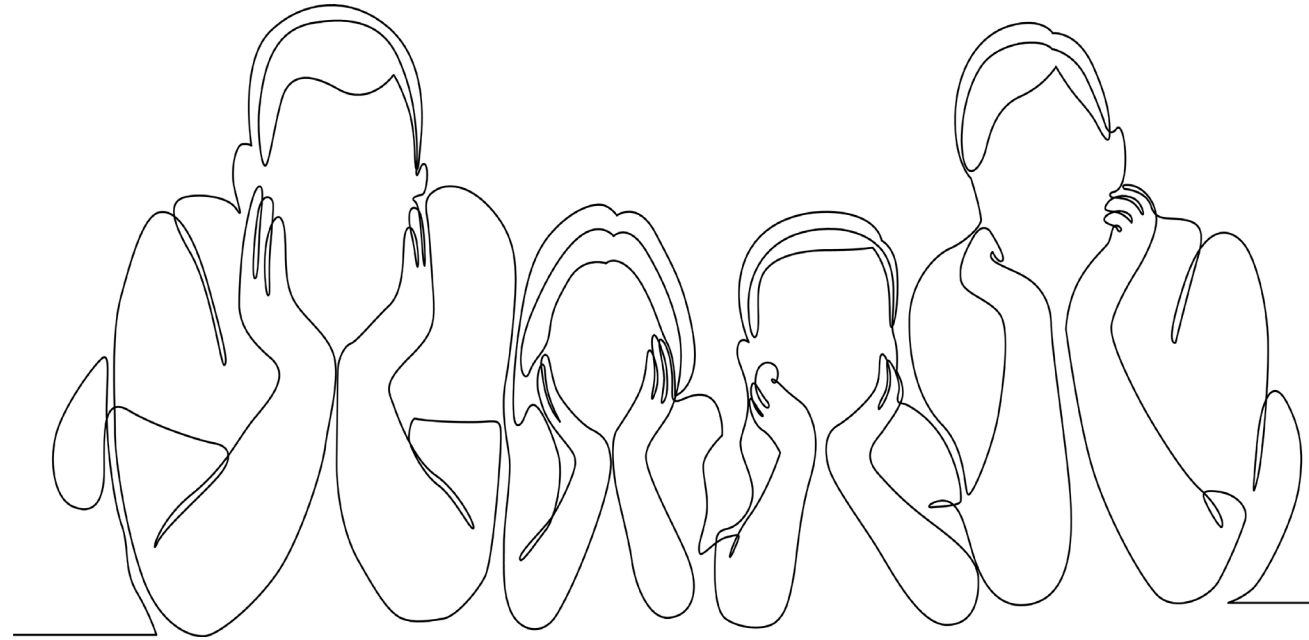


Services



Child and Family Services Reviews Round 3 Findings 2015-2016

- Families did better when **parents and children were involved in case planning**
- Families did better when there was **frequent quality parenting time**



(US Dept of Health and Human Services, Children's Bureau, 2017)

Needs

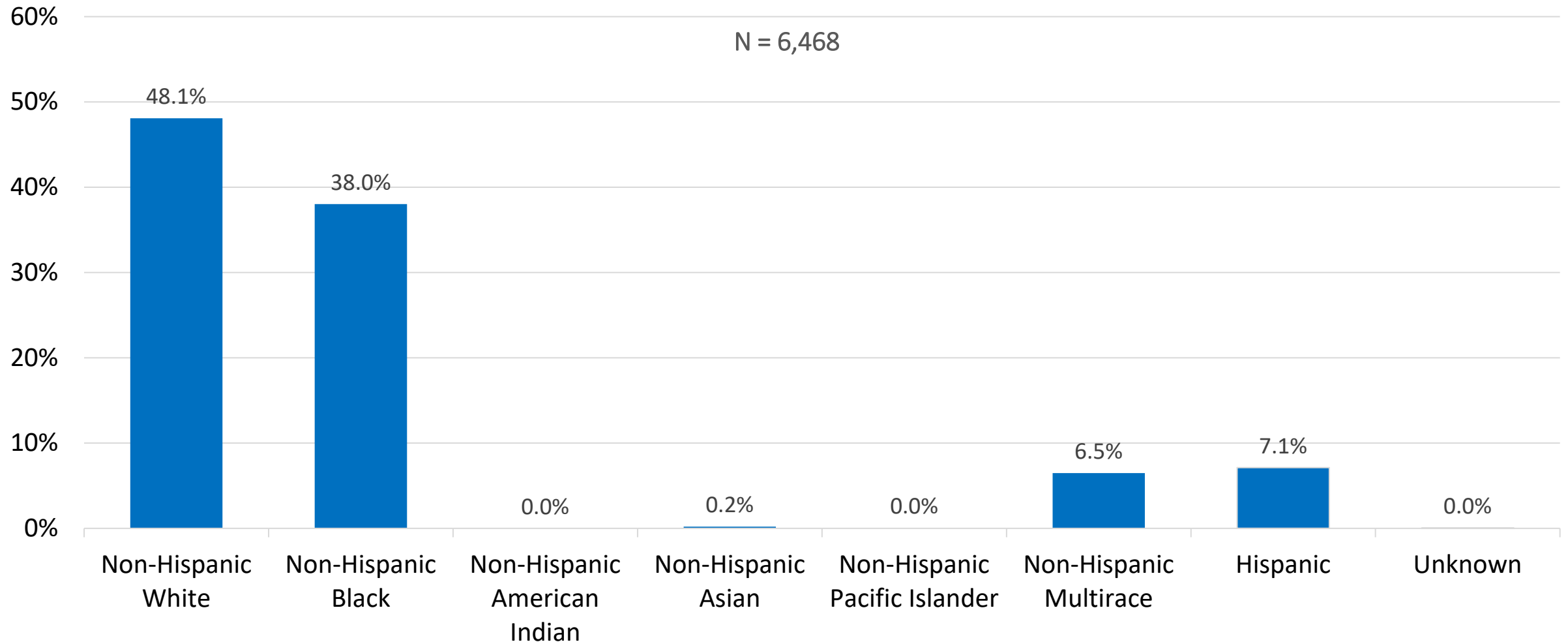
Adverse Childhood Experiences' (ACEs) Informed Approach to Substance Abuse Treatment



# of ACEs	Outcome
4≥	500% more likely to abuse alcohol
5≥	7-10x more likely to report illicit drug abuse
6≥	46x more likely to use drugs intravenously

(Felitti, 2003)

Percent of Children who Entered Out of Home Care, by Race/Ethnicity at Removal in Georgia, 2019



Note: Estimates based on children who entered out of home care during Fiscal Year

Source: AFCARS Data, 2019 v1

What is recovery?

SAMHSA's Working Definition

"Recovery is a process of change through which individuals improve their health and wellness, live self-directed lives, and strive to reach their full potential."

Access to evidence-based substance use disorder treatment and recovery support services are important building blocks to recovery.



Four Major Dimensions of Recovery

Health

Overcoming or managing one's disease(s) or symptoms and making informed, healthy choices that support physical and emotional well-being

Home

Maintaining a stable and safe place to live

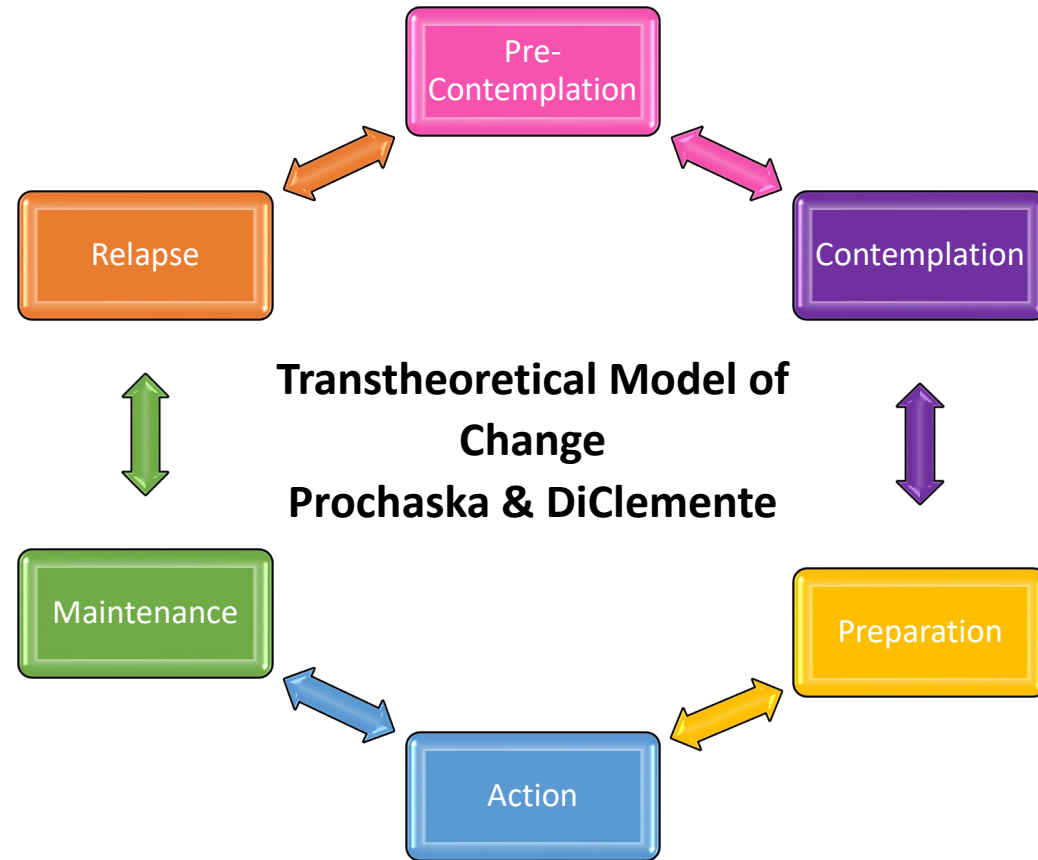
Purpose

Conducting meaningful daily activities, such as a job, school or volunteerism, and having the independence of income, and resources to participate in society

Community

Having relationships and social networks that provide support, friendship, love, and hope

Stages of Change



- Family Treatment Court requires participants to engage in major change in many life domains
- The participant will be ready for some of these changes
- Other changes may require additional coaching

Motivational Interviewing is an effective strategy to help participants progress along the Stages of Change

Services Included in the Case Plan are Based On Valid and Reliable Assessments

- The FTC ensures that children and parents receive comprehensive services that meet their assessed needs and promotes sustained family *safety, permanency, recovery, and well-being*.
- In addition to *high-quality* substance use and co-occurring mental health disorder treatment, the FTC's *family-centered* service array includes other clinical treatment and related clinical and community support services.
- These services are *trauma responsive*, include family members as active participants, and are grounded in cross-systems collaboration and *evidence-based or evidence-informed* practices implemented with fidelity.

FTC Milestones What are the components

- Family Treatment Court Compliance
- Substance Abuse Treatment
- Child Welfare
- Parenting
- Legal
- Children

Establish small goals for each task to help parents be hands on with their compliance. Keep the first set of milestones simple and short so that the parents see progress which can serve as encouragement.

Solutions



Coordinated Case Planning

Challenges

- Each agency has its own mandates, requirements, funding sources, and timelines – may require parents to complete duplicative or competing services
- Parents and children have multiple case managers with varying levels of involvement and oversight
- Goals for each case plan may differ significantly
- Can create conflicting requirements or overlapping scheduling demands, leading to impossible expectations for parents, children, and their support networks



Coordinated Case Planning

Solutions

- Meet with leadership from agencies that serve families in the FTC
- Discuss expectations and determine roles and responsibilities
- Create agreements about requirements to help parents follow all agency expectations (e.g., drug testing)
- Cross-train team members on partner agency expectations, roles, and responsibilities so case management services can assist parents to accomplish and prioritize tasks



Coordinated Case Planning

Solutions

- Prioritize being family-centered by ensuring requirements do not conflict with parenting time
- Collaborate to ensure stakeholders want same outcome, work together so parents don't have to figure out which system to please
- Learn to share information that all agencies need by utilizing effective releases of information



Effective Case Plans

- ❖ Case plans are developed with the parent, child (if appropriate), and family (of choice).
- ❖ Services included in the case plan are based on valid and reliable assessments.
- ❖ Case plan activities prioritize a high level of parent-child interaction.
- ❖ Case plans initially focus on helping families enroll and engage in treatment services quickly.
- ❖ Case plans should be reviewed and updated regularly.



Q & A



Family Treatment Court Best Practice Standards

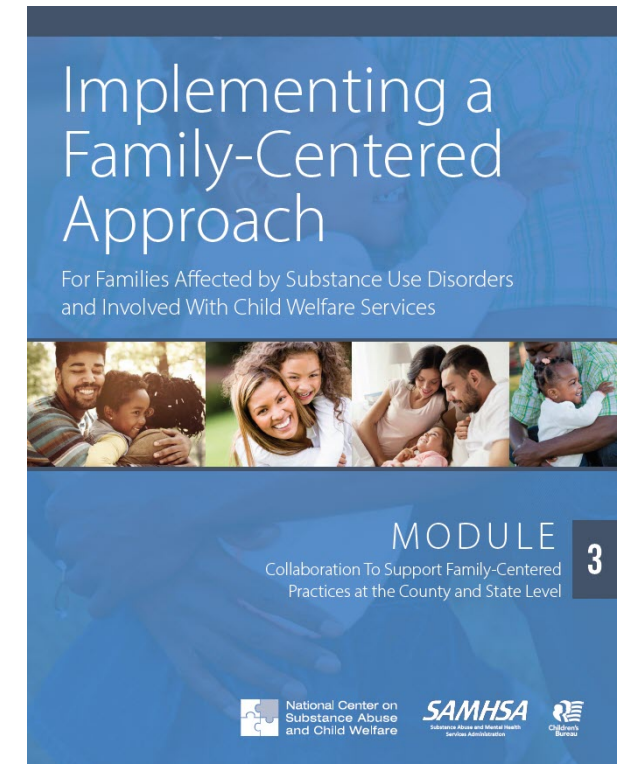
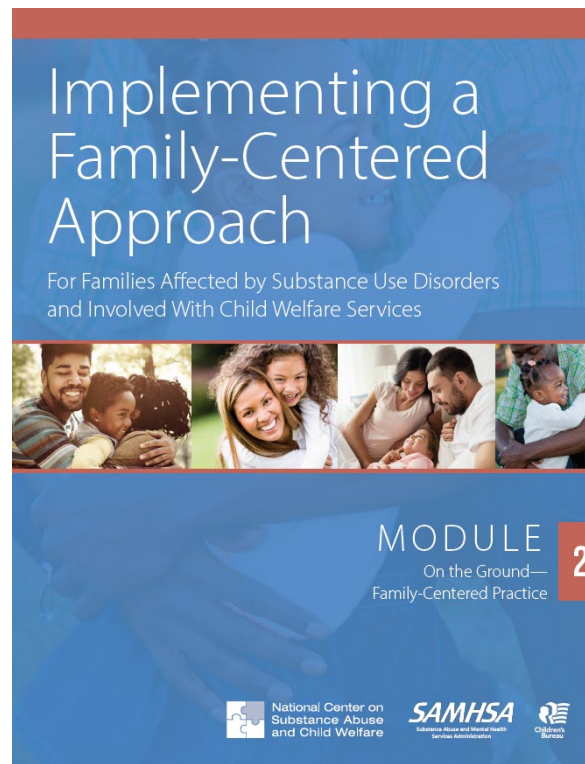
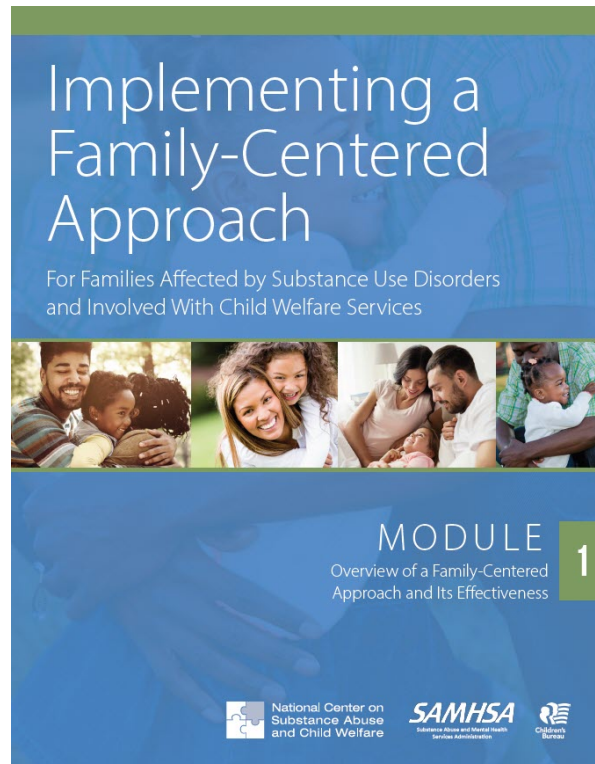
8 *Standards* and Key Provisions

To obtain a copy or for more information:

FDC @ cffutures.org

Family-Centered Approach Modules

- Module 1: *Overview of a Family-Centered Approach and Its Effectiveness*
- Module 2: *On the Ground—Family-Centered Practice*
- Module 3: *Collaboration To Support Family-Centered Practices at the County and State Level*



Course #1: May 25, 2021

Applying a Family-Centered,
Problem-Solving Approach to
Family Treatment Court Staffing
and Court Hearings



Course #2: July 8, 2021

Disrupting Stigma to Support
Meaningful Change for Families
in Family Treatment Court



Course #3: October 12, 2021

Harnessing the Power of Parenting
Time to Strengthen the Parent-
Child Relationship and Support
Reunification Efforts in Your Family
Treatment Court



11 – 12:30 PT | 2 – 3:30 ET

Register at: cffutures.org/ftc-practice-academy



Questions? Email us at fdc@cffutures.org

Previously named the Family Drug Court Learning Academy

FAMILY TREATMENT COURT

Peer Learning Court Program



Center for Children and Family Futures
Strengthening Partnerships, Improving Family Outcomes

King County FTC, WA

Tompkins County FTC, NY

Wapello County FTC, IA

Grant County FRC, IN

Jefferson County FIT Court, CO

Baltimore City Circuit FRP, MD

Pima County FDC, AZ

Travis County PIR/FDTC, TX

PEER-TO-PEER SUPPORT INCLUDES:

- Virtual learning opportunities (e.g., video conference calls, topic-specific consultation).
- Access to FTC policies, handbooks, practices, and lessons.
- A virtual and/or in-person team site visit, providing an opportunity to observe their FTC court proceedings and staffing sessions.

To learn more about the FTC Peer Learning Court Program or to participate in a peer-to-peer connection, contact us peerlearningcourts@cffutures.org

Thank you for the work you do on behalf
of children and families in Georgia!



Center for Children and Family Futures

Family Drug Court Training and Technical Assistance Program

www.cffutures.org

fdc@cffutures.org

