

System of Care: Juvenile Court Programs



Good Afternoon & Welcome



Dr. Kristi L. Burk
Program Coordinator



Office of Children, Young Adults, & Families
Division of Behavioral Health
Georgia Department of Behavioral Health & Developmental Disabilities
September 15, 2020

Georgia Department of Behavioral Health & Developmental Disabilities (DBHDD)

What We Do

- Operate five state hospitals (Adults Only)
- Community-based services through contracted providers

Who We Serve

- People living with mental health challenges, substance abuse disorders, intellectual and developmental disabilities
- Any combination of the above

Primary Responsibility

- To serve people who are uninsured, recipients of Medicaid and others with few resources or options

DBHDD – Organization Divisions



Accountability & Compliance



Behavioral Health



Developmental Disabilities



Hospital Services



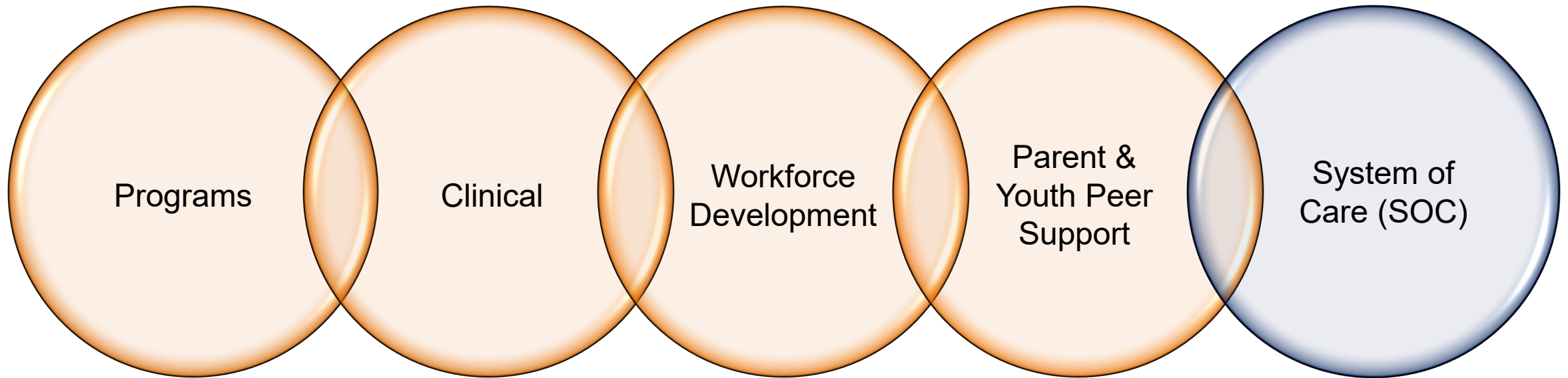
Performance Management & Quality Improvement

DBHDD Organization – Behavioral Health Division

- Office of Adult Mental Health
- **Office of Children, Young Adults, & Families** ✓
- Office of Addictive Diseases
- Office of Crisis Coordination
- Office of Deaf Services
- Office of Recovery Transformation
- Office of Behavioral Health Prevention and Federal Grants
- Office of Supportive Housing
- Six Regional Field Offices



The Office of Children, Young Adults, & Families (OCYF)



System of Care (SOC)

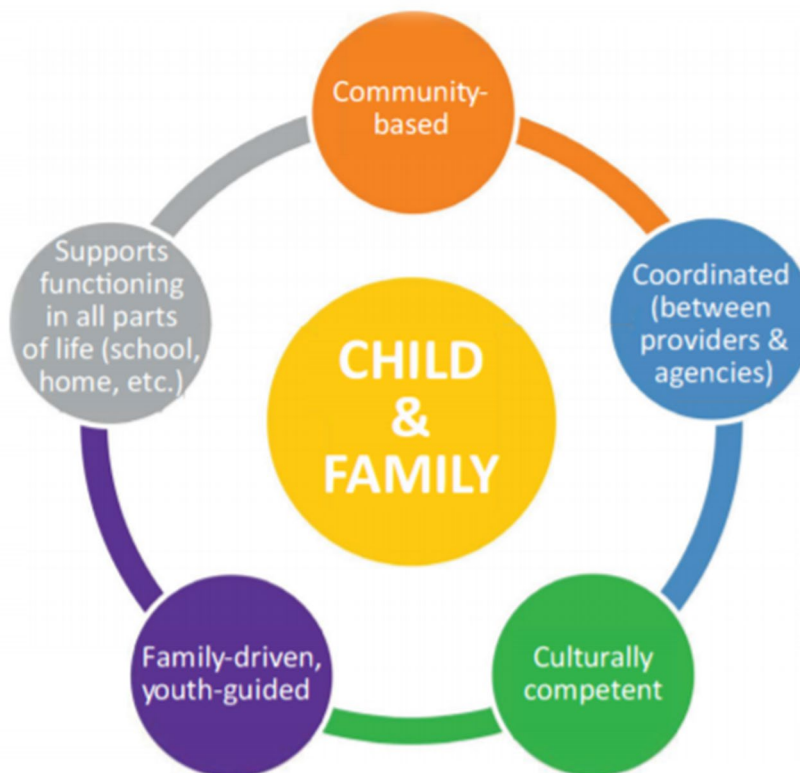
What is SOC?

SOC is an organizational framework:

- Has a spectrum of effective, community-based services;
- Supports for children and youth with or at risk for mental health or other challenges.

SOC is organized into a coordinated network:

- Builds partnerships with families and youth;
- Addresses their cultural and linguistic needs;
- Help them to function better at home, in school, in the community, and throughout life.



SOC: GOALS

To improve outcomes for children, young adults, and families, managing serious mental health challenges and substance use concerns by focusing on social determinants such as:

- Education
- Employment
- Social connectedness
- Access to behavioral health services
- Resiliency
- Vocational/independence development



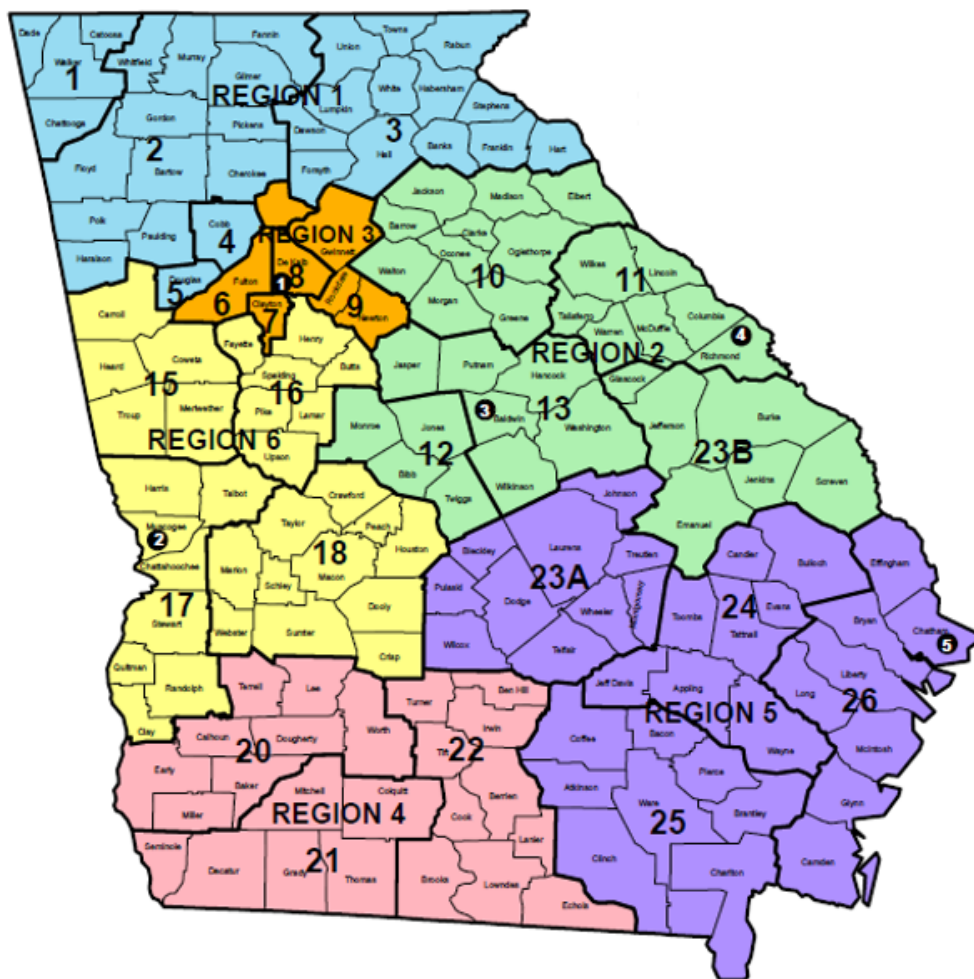
Working Toward The Goal: OCYF & SOC Coordinators



Community-Based Service Providers: SOC Coordinators & Regions

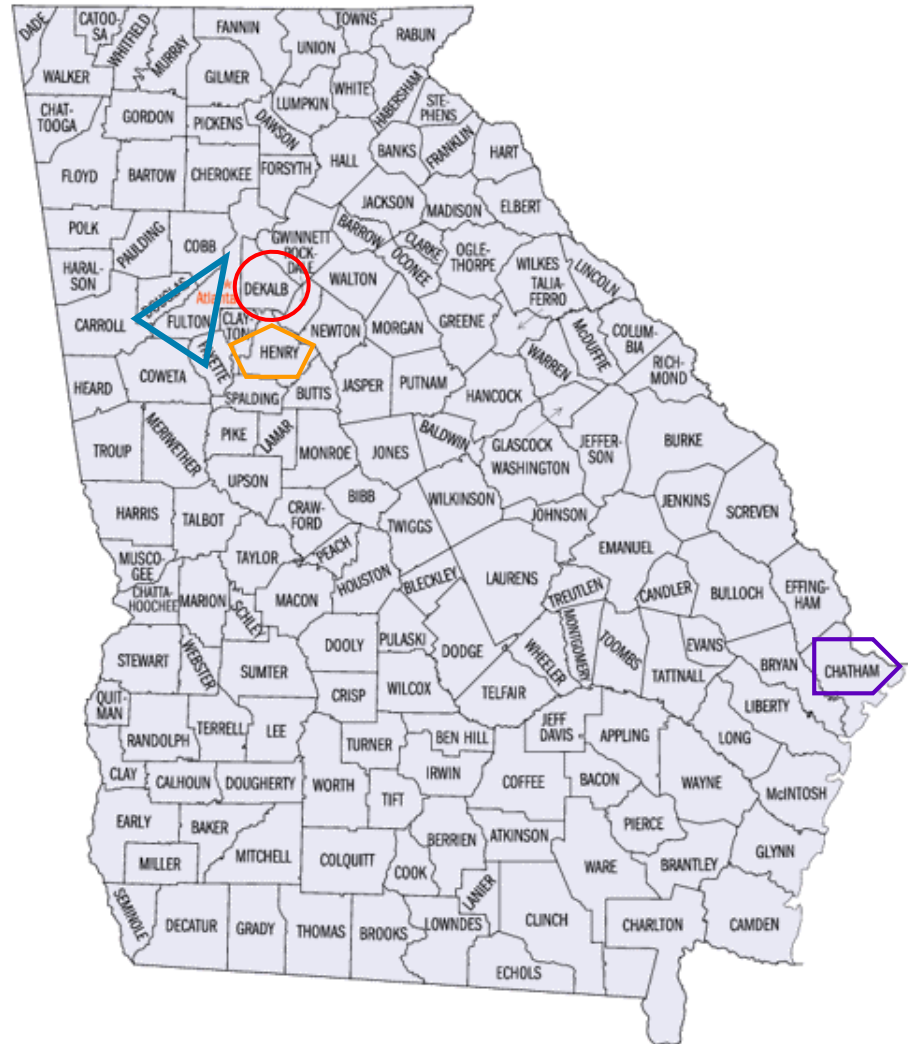
SOC Coordinators Partnered with OCYF

- Advantage BHS
- Albany Area CSB (Aspire)
- Avita (Georgia Mountains)
- Chris 180, Inc. (Region 3)
- Clayton Center CSB
- Cobb County CSB
- CSB of Middle Georgia
- Dekalb County CSB
- Gateway BHS
- Georgia Pines
- Highland Rivers CSB
- Legacy (South Georgia CSB)
- Lookout Mountain CSB
- McIntosh Trail
- Middle Flint CSB
- New Horizon CSB
- Oconee Center CSB
- Pathways BHDD
- Pineland BHDD
- River Edge BHC
- Serenity (CSB of East Central)
- Unison BHS
- Vashti (Region 4)
- View Point Health



1. Lookout Mountain Community Services
2. Highland Rivers CSB
3. Avita Community Partners
4. Cobb CSB
5. Douglas CSB
7. Clayton CSB
8. DeKalb CSB
9. View Point Health
10. Advantage Behavioral Health Systems
11. Serenity Behavioral Health (CSB of East Central Georgia)
12. River Edge Behavioral Health Center
13. Oconee CSB
15. Pathways Center for BH and Developmental Growth
16. McIntosh Trail CSB
17. New Horizons CSB
18. Middle Flint Behavioral Healthcare
20. Aspire BH and DD Services (formerly Albany CSB)
21. Georgia Pines Community MHMRSA Services
22. Legacy Behavioral Health (formerly BHS of South Georgia)
23. (A) CSB of Middle Georgia
23. (B) CSB of Middle Georgia (Ogeechee Division)
24. Pineland Area CSB
25. Unison BH (formerly Satila CSB)
26. Gateway CSB

SOC Coordinators: Juvenile Courts



Fulton County



DeKalb County



Henry County



Chatham County

Juvenile Court: Pathway to Services and Supports



Juvenile Court: Pathway to Services and Supports



Juvenile Court

Case Review:

- Judge
- Public Defender
- Guardian Ad Litem
- Probation Officer
- DFCS
- Court Staff

Juvenile Court: Pathway to Services and Supports

Partnered with SOC Coordinators

- SOC Coordinator receives referral/case
- Completes Assessment for services
- Meet with family (in some cases)
- Coordinate appropriate services



SOC Coordinator Roles



SOC Coordinator Roles

Agencies

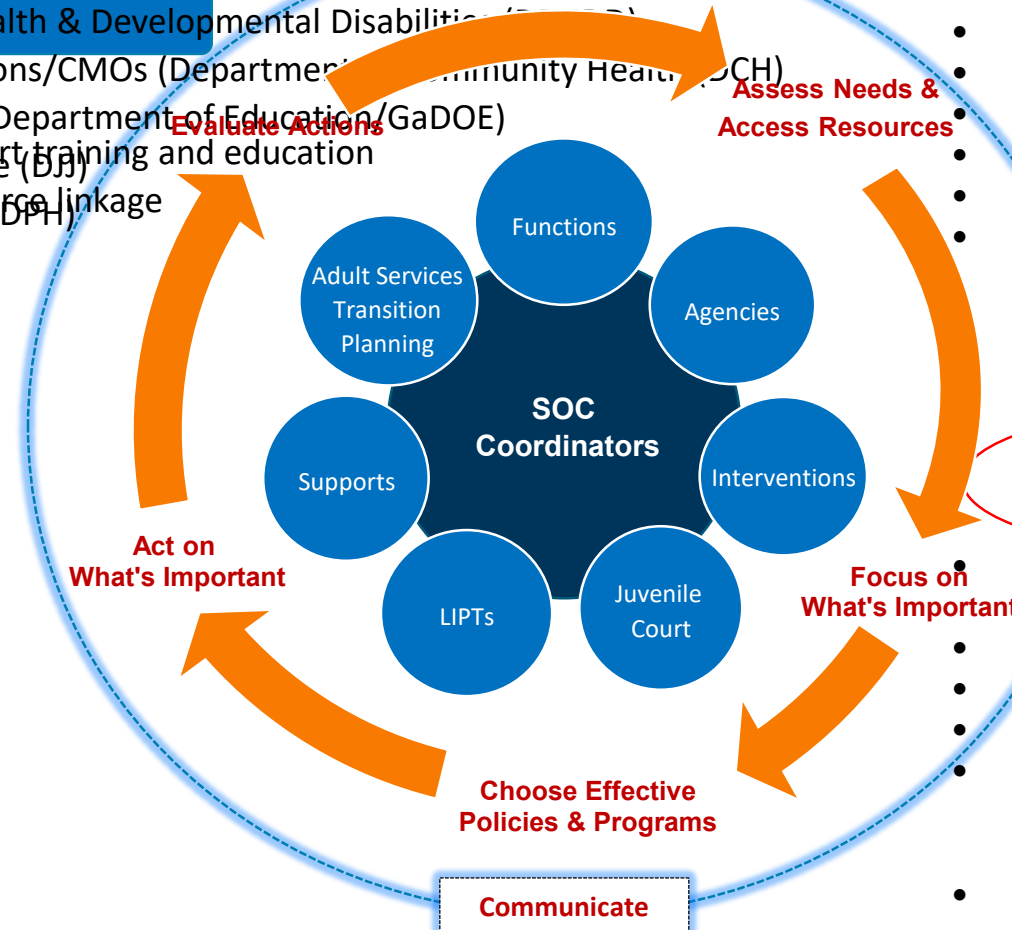
Functions

- Department of Behavioral Health & Developmental Disabilities (DBHDD)
- Care Management Organizations/CMOs (Department of Behavioral Health & Developmental Disabilities)
- Local Education Agency/LEA (Department of Education/GaDOE)
- Member, family, and natural support training and education
- Department of Juvenile Justice (DJJ)
- Subject matter expertise and resource linkage
- Department of Public Health (DPH)
- Transition to adulthood

Supports

Interventions

- DBHDD OCYF Program Staff
- Georgia Apex Program
- DBHDD High Utilization Management Program (HUM)*
- DBHDD Medical Eligibility Specialists
- CMO Care Coordinators
- Intensive Customized Care Coordination (IC3)
- DFCS Behavioral Support & Therapeutic Support Specialists
- Intensive Family Intervention Services (IFI)
- DJJ Community Services & Support Services Specialists
- L.I.G.H.T. Early Treatment Program*
- Family Connection Partnership
- Local Interagency Planning Teams (LIPTs)
- Georgia Chapters, Federation of Families for Children's Mental Health
- Mental Health Resiliency Support Clubhouses
- Georgia Supported Employment & Education Program
- GVRA Counselors
- Housing Services Coordinators
- Juvenile Court
 - * = Not available in all DBHDD regions
 - C.H.I.N.S. Coordinators
 - Court Liaisons
- Regional Education Service Agency (RESA) School Climate Specialists
- Parent Certified Peer Specialists
- Youth Certified Peer Specialists
- Local public health department
- System of Care Coordinators
 - A.I.M.E.*
 - Care Management Entities/CMEs (IC3)
- Center of Excellence for Children's Behavioral Health



Juvenile Court: Pathway to Services and Supports

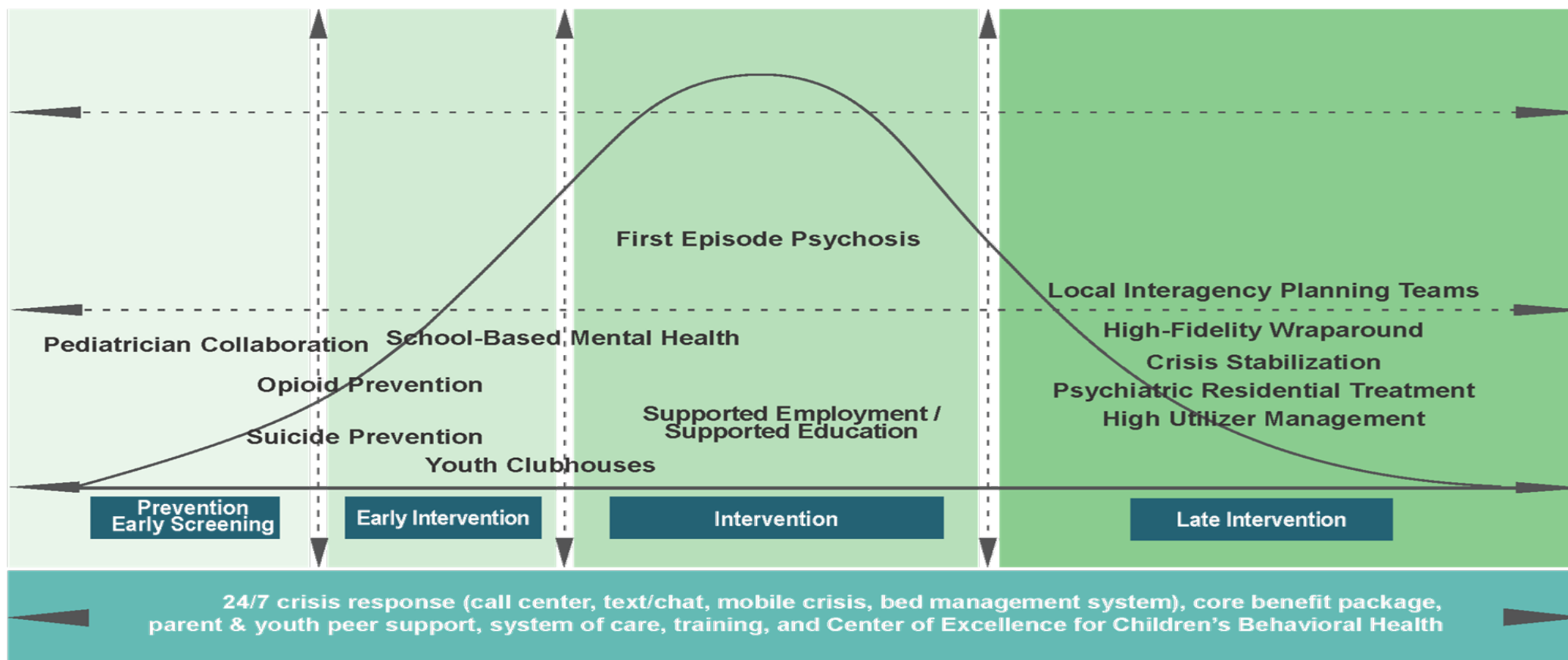


Services & Supports

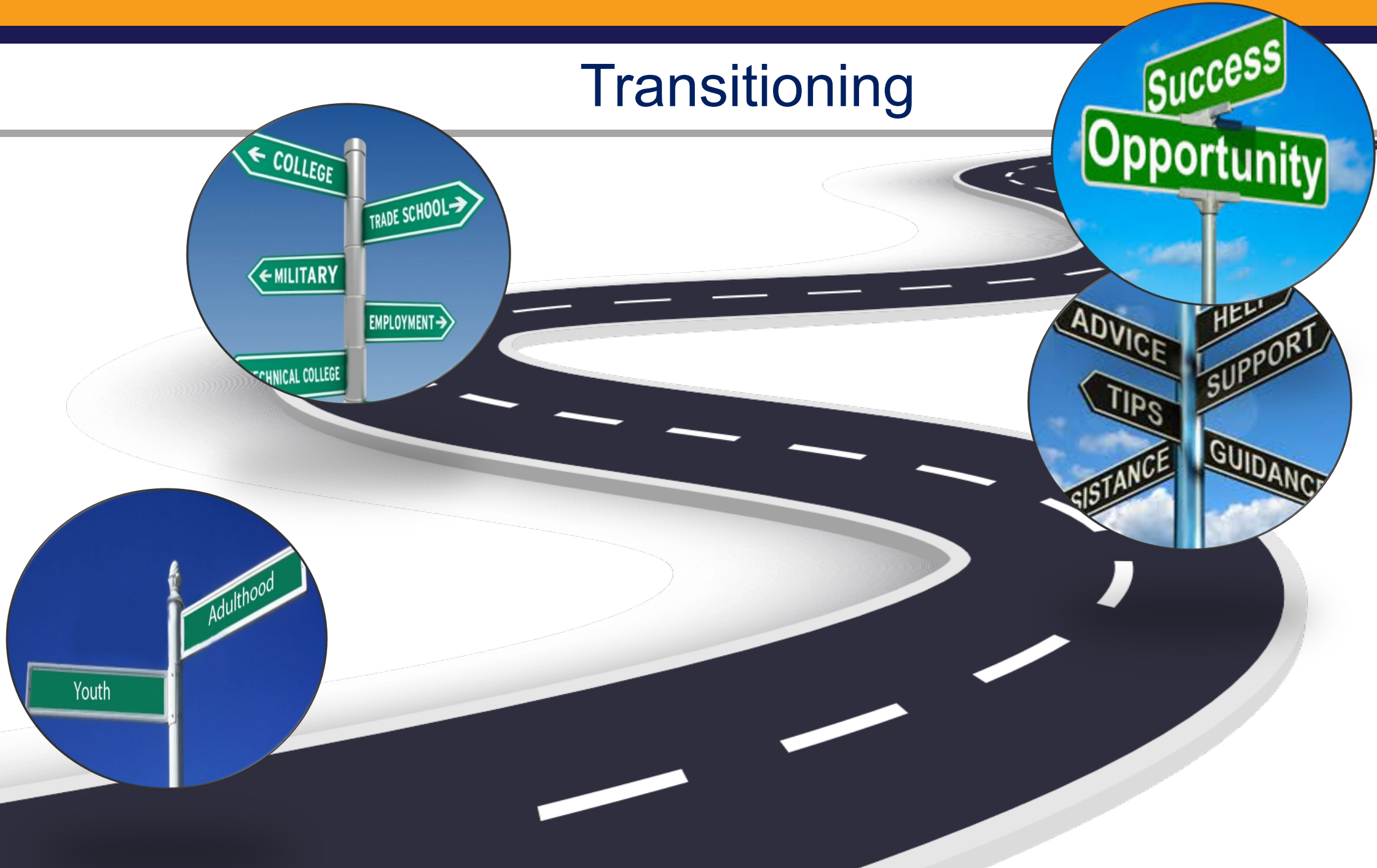
- Coordinate appropriate services
- Encourage consistent contact
- Monitor services progress
- Supports clients throughout treatment or service progress

SOC: Public Service Array

BEHAVIORAL HEALTH CONTINUUM OF CARE PHASES & SERVICES PROVIDED



Transitioning



Questions & Answers



Dr. Kristi L. Burk

Program Coordinator, Office of Children, Young Adults & Families

Division of Behavioral Health

Georgia Department of Behavioral Health & Developmental Disabilities

kristi.burk@dbhdd.ga.gov

BE D·B·H·D·D

Georgia Department of Behavioral Health & Developmental Disabilities

